

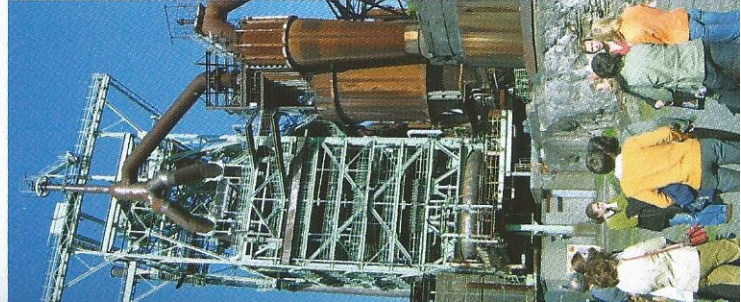
The Henrichshütte Hattingen Ironworks

A museum of iron and steel

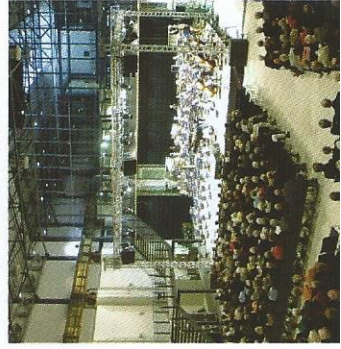
Sparks were flying for 150 years when the blast furnaces at the Henrichshütte iron and steel works spat out their molten iron. Nowadays this unique original site has been revived to give visitors a vivid idea of the history of iron and steel.

Over 10,000 people used to work on this gigantic industrial site. They produced coke, iron and steel, poured, rolled and forged the metal. In 1987 the last blast furnace in

oldest blast furnace in the Ruhrgebiet



A concert in the blower shed



The demonstration foundry

Hattingen was blown out despite massive protests and resistance. Today it is the oldest blast furnace still existing in the Ruhrgebiet and, at the same time, the largest exhibit in the LWL Industrial Museum. A glass lift takes visitors up to the top of the 55 metre furnace. From here visitors can enjoy breath-taking views of past and present features in the region.

Why not visit our **demonstration foundry** where metal casting still

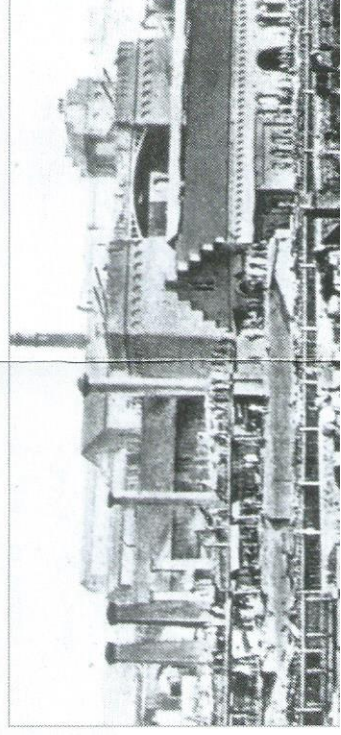
A torchlight guided tour



Fighting for the steel works 1987

takes place today? Alternatively you can send your children on a journey of discovery with our museum mascot "Ratty". Here they can learn more about the flora and fauna existing on the disused industrial site in our **eco-workshop**. In the evening we can offer you a fascinating guided tour by torchlight, or you can visit a concert in the **blower shed** and afterwards combine it with a gourmet meal in the "Henrichs" restaurant.

Henrichshütte, 1874



A quiet protest 1987

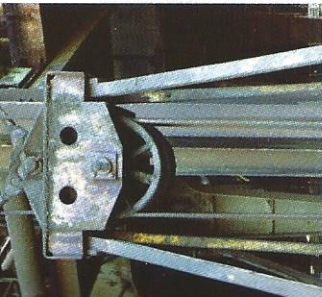
From the foundry to the Henrichs Park

In 1854 the presence of ore, coal and a river tempted an aristocrat from the Harz region to set up a company on the River Ruhr. Over the decades the original foundry belonging to **Duke Henrich** of Stolberg-Wernigerode grew into a gigantic iron and steel works with a number of different operations. The Henrichshütte plant produced a broad spectrum of iron and steel products, from sheet metal for the automobile industry to tank chassis.

In 1989 the Regional Association of Westphalia-Lippe (LWL) seized the opportunity to turn the whole site into an **industrial museum** by

taking over responsibility for the most essential buildings and their equipment. The plant included the gigantic ore bridge, the blast heating apparatus and several kilometres of railway tracks and pipelines. Before the steel plant was blown up, the museum took over the converters, the ingot moulds and the castings.

In 2004 the forge was the final hot operation to cease work in the old plant. After that medium-sized companies and leisure firms gradually began to take root in the new **Henrichs Park**. Thus the Henrichshütte is a symbol of the rise, and boom of iron and steel manufacturing on the Ruhr – not forgetting the process of structural transformation in the Ruhrgebiet.



Fun with technology



The Blower Shed

Discovering iron-making

The path of iron

The path of iron you will follow shows the flow of material from ore, coke and lime to molten pig iron. The tour starts as you go through the ore crushers and up to the top of the blast furnace via a

The tapping bay



Ore bunker

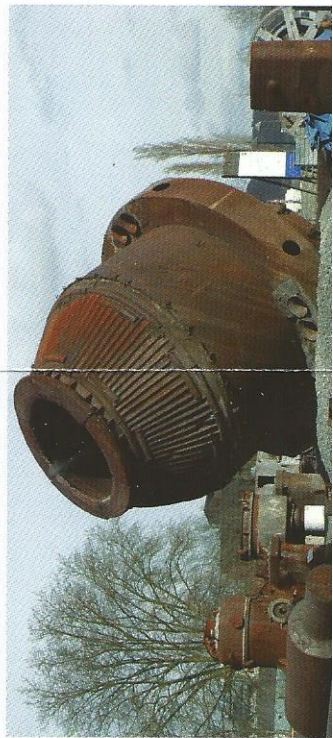
The path of steel

The path of steel is still under construction. In converters as high as 100 metres it shows how brittle iron was converted into forgeable steel. Here we shall tell you stories of casting, rolling and forging, of the dangerous work with molten metal, of a very unique type of worker and a world of steel.

The green path

After the plant was closed down the natural world reconquered the disused industrial site according to its own rules. The green path shows you where wild marjoram, stinking cranesbill, trees of heaven, kestrels and butterflies have made their home; which exotic plants arrived in Hattingen as stowaways on raw materials from all over the world, and the very peculiar conditions under which they flourish on the Henrichshütte site.

The steel converter

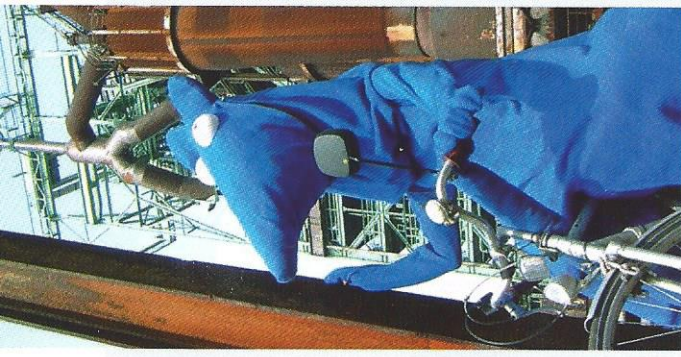
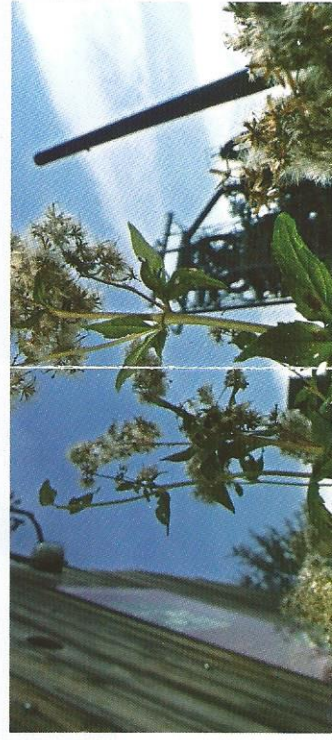


Children cracking Ratty's treasure trove

Ratty's path

No one knows their way around the ironworks site as well as our little blue rat. The museum mascot takes children – and not only children – along Ratty's path and tells them the secrets of steel and iron. Anyone who wishes to prise open her treasure trove to get at the valuable industrial objects within will have to put in a bit of effort here. What goes into the blast furnace? And what comes out? Ratty invites boys and girls to climb into her pipes and

Plants on the disused industrial site



Ratty on tour

niches and helps them answer these questions. At all the stopping points along Ratty's path there are models and opportunities for hands-on activities to help you to get a better grasp of what happens in a blast furnace. Using the computer game "Ratty at the Blast Furnace" children can test themselves about everything they have learnt along Ratty's path.

Experiencing the ironworks

What we offer

Our industrial museum can offer many attractive experiential and learning programmes. The **demonstration foundry** is the right place for anyone who wants to get practical experience of working here. Here red-hot iron and steel is flowing once again, ready for forging. Memories of war and armaments, forced labour and bombing are revived in the **air-raid shelter**.

The „**Mischief-Makers Steelworks**“ is just the right place for younger blast-furnace workers. In this fun furnace they can play and learn about the works at the same time. **On Sundays** the LWL Industrial Museum pulls out all the stops: Sunday

walks and bunker tours for the whole family. Ratty tours for the children, an eco-workshop, train journeys (every first Sunday of the month) and foundry demonstrations (every third Sunday of the month between April and October) turn Sunday into a very special day. The guided **late shift tour beneath the moonlight** has long been a cult event in Hattin-

gen. We have collected the entire museum's educational programme and guided tours in a special flyer which we shall be delighted to send you on request. You can also find all our offers and dates on the internet at:

www.lwl-industriemuseum.de.

Things are really buzzing here!

The once forbidden city has long been transformed into a forum for social activities and sociable life. This is particularly true of the **casting bay**. Hundreds of guests regularly pour into our **concert** and **theatre evenings**, **trade fairs** and **markets**, **exhibitions** and **conferences**. Alternatively people come here simply to enjoy the unique atmosphere of the "Henrichs" restaurant with its huge glass windows.

The ironworks with its imposing relics of industrial history plays host to major events several times a year.

The Night Shift



Service: Museum
Phone: 0049 (0)2324 9247-0

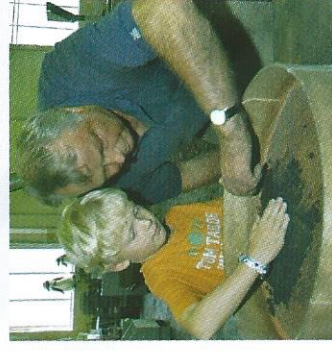
Service: Blast Shed
Phone: 0049 (0)2324 9247-149

„Henrichs“ restaurant
Phone: 0049 (0)2324 685963

The Mischief-Makers Steelworks



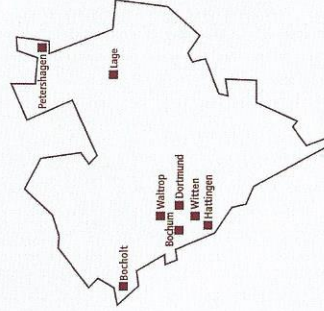
In the demonstration foundry



LWL-Industriemuseum Westphalian State Museum of Industrial Heritage

The LWL-Industriemuseum is an umbrella museum comprising eight different industrial heritage sites.

It was set up in 1979 by the Regional Association of Westphalia-Lippe (LWL). It was not only the first museum of its kind in Germany, it is also the largest. Its mission is to communicate, research and preserve the culture of the industrial era from the earliest years to the present day.



Eight Sites – One Museum
www.lwl-industriemuseum.de



Photos: A. Hudemann, M. Holtappels, M. Schützel/LWL-Industriemuseum, L. Friedrich

As of: December 2014

Dortmund



Bochum



Witten



Hattingen



Waltrop



Bocholt



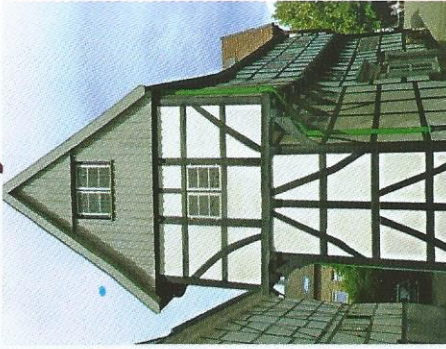
Lage



Petershagen



Options for a good day out



The Bügelseisenhaus Museum

People who enjoy antique picturesque surroundings should not miss the **historic town centre** of Hattingen. It is a jewel of half-timbered houses whose attractive streets are ideal for a stroll, for shopping and eating.

Further information at:
Hattingen Marketing
Phone: 0049 (0)2324 951395

Useful internet addresses:
www.hattingen.de
www.hattingen-marketing.de
www.henrichs-restaurant.de
www.montanticketruhr.de
www.route-industriekultur.de
www.ruhrtairadweg.de
www.unsere-henrichshuette.de

There's more in Hattingen than you think

Directly in front of the entrance of the LWL Industriemuseum you can find active paths for hikers, skiers and skaters leading through the picturesque Ruhr Valley. You can also experience industrial heritage with our **Montan-erlebnisBahn** that offers visitors a railway trip, a guided tour through the visitor centre at the Nightingale Centre, along with a visit to the demonstration forge. Alternatively you can climb a bike and ride along the **Ruhr Valley Cycle Trail** which links the Henrichshütte with the LWL Industriemuseum at the Nightingale Centre in Witten.

We can offer cyclists bike racks, lockers, tools and more.



Contact:

LWL-Industriemuseum
Westfälisches Landesmuseum für Industriekultur
Henrichshütte in Hattingen
Werksstraße 31-33
45527 Hattingen
Germany
Phone: 0049 (0)2324 9247-0
Fax: 0049 (0)2324 9247-112
E-Mail: henrichshuette@lwl.org
www.lwl-industriemuseum.de
www.facebook.com/LWLIndustriemuseum

Opening hours*

Tue-Sun: 10.00 – 18.00
(Last admission 17.00)
Fri: 10.00 – 20.00
(Last admission 19.00)

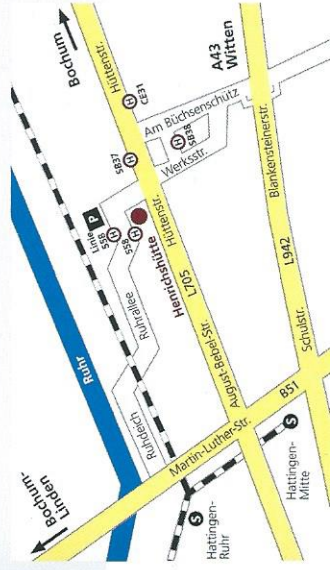
Persons with handicaps

Our museum is only partly accessible to people with mobility problems. On the site there are "touch models" to help people with restricted eyesight to find their way around the museum. For further information see: www.lwl-industriemuseum.de

Getting here by car: A 43, exit Witten-Herbede / Hattingen, and follow the "Route Industriekultur" signs to Hattingen.

By bus and rail: By rail from Essen Central Station (Hbf) with line S3, alight "Hattingen-Mitte". Then cross the pedestrian bridge to get to the bus station. Here take bus CE 31 or SB 37 to "Henrichshütte". Alternatively take bus 558 and alight at "Industriemuseum". English travel information under: www.vrr.de

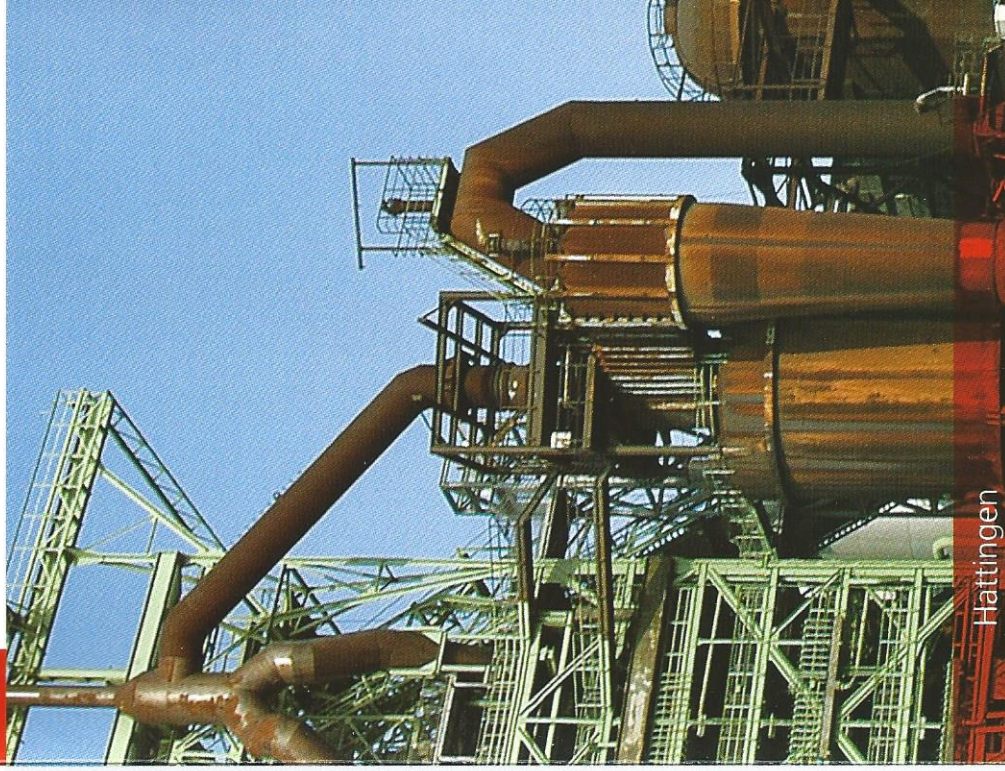
By bike: it's 500 metres away from the Ruhr Valley Cycle Trail. Bike garages are available. Detailed internet information for cyclists can be found at: www.lwl-industriemuseum.de



Admission prices*

Adults: €4.00
Groups (16 persons upwards) €3.50 per person
Concessions: ** €2.50
Children, young people (6–17) and school students €1.50
School students*** with a guided tour €1.10
(Two supervisors free)
Family day ticket €9.00
We recommend the LWL Museum Card

* We reserve the right to make changes
Social security recipients, students (max. age 30), apprentices, persons performing national and civilian service duties, handicapped persons, at least 80% (accompanying person free)
*** as part of the museum's educational programme



Hattingen

The Henrichshütte Ironworks

A museum of iron and steel

www.lwl-industriemuseum.de

LWL
Für die Menschen.
Für Westfalen-Lippe.